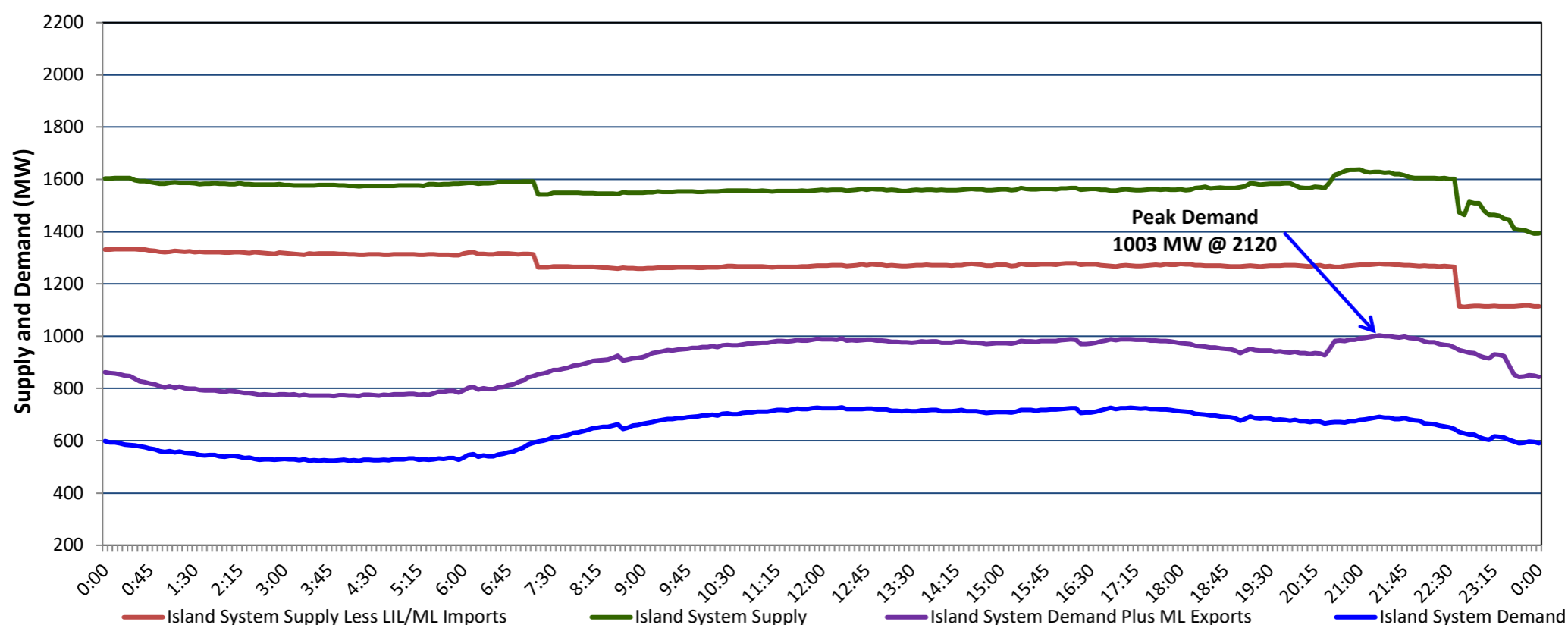


**Newfoundland Labrador Hydro (NLH)  
Supply and Demand Status Report Filed Wednesday, July 26, 2023**

**Section 1  
Island Interconnected System Supply, Demand & Exports  
Actual 24 Hour System Performance For Tuesday, July 25, 2023**



**Supply Notes For July 25, 2023**

- A As of 0701 hours, March 06, 2023, Upper Salmon Unit unavailable (84 MW).
- B As of 0800 hours, May 21, 2023, Holyrood Unit 2 unavailable due to planned outage (170 MW).
- C As of 0903 hours, June 29, 2023, St. Anthony Diesel Plant available at 8.85 MW (9.7 MW).
- D As of 0856 hours, July 01, 2023, Holyrood Unit 3 available but not operating (150 MW).
- E As of 0800 hours, July 09, 2023, Holyrood Unit 1 unavailable due to planned outage (170 MW).
- F As of 0938 hours, July 09, 2023, Cat Arm Unit 1 unavailable due to planned outage (67 MW).
- G As of 2059 hours, July 13, 2023, Stephenville Gas Turbine unavailable (50 MW).
- H At 0714 hours, July 25, 2023, Hardwoods Gas Turbine unavailable due to planned outage (50 MW).
- I At 2238 hours, July 25, 2023, Bay d'Espoir Unit 5 unavailable (76.5 MW).
- J At 2238 hours, July 25, 2023, Bay d'Espoir Unit 6 unavailable (76.5 MW).

**Section 2  
Island Interconnected Supply and Demand**

Wed, Jul 26, 2023	Island System Outlook <sup>3</sup>		Seven-Day Forecast	Temperature (°C)		Island System Daily Peak Demand (MW)	
				Morning	Evening	Forecast	Adjusted <sup>7</sup>
Available Island System Supply: <sup>5</sup>	1,491	MW	Wednesday, July 26, 2023	22	22	1,125	1,125
NLH Island Generation: <sup>4,8</sup>	800	MW	Thursday, July 27, 2023	20	22	735	735
NLH Island Power Purchases: <sup>6</sup>	95	MW	Friday, July 28, 2023	21	19	780	780
Other Island Generation:	205	MW	Saturday, July 29, 2023	18	16	745	745
ML/LIL Imports:	391	MW	Sunday, July 30, 2023	14	11	755	755
Current St. John's Temperature & Windchill:	21 °C	N/A °C	Monday, July 31, 2023	13	13	810	810
7-Day Island Peak Demand Forecast:	1,125	MW	Tuesday, August 1, 2023	14	13	775	775

**Supply Notes For July 26, 2023**

- Notes:
- Generation outages for running and corrective maintenance are included. These are not unusual for power system operations. They generally do not impact customer supply. The power system operators schedule outages to system equipment whenever possible to coincide with periods when customer demands are low and sufficient supply reserves are available. However, from time to time equipment outages are necessary and reserves may be impacted.
  - Due to the Island system having no synchronous connections to the larger North American grid, when there is a sudden loss of large generating units there may be a requirement for some customer's load to be interrupted for short periods to bring generation output equal to customer demand. This automatic action of power system protection, referred to as under frequency load shedding (UFLS), is necessary to ensure the integrity and reliability of system equipment. Under frequency events have typically occurred 5 to 8 times per year on the Island Interconnected System and the resultant customer load interruptions are generally less than 30 minutes. With the activation of the Maritime Link frequency controller during the winter of 2018, UFLS events have occurred less frequently.
  - As of 0800 Hours.
  - Gross output including station service at Holyrood (24.5 MW) and improved NLH hydraulic output due to water levels (35 MW).
  - Gross output from all Island sources (including Note 4).
  - NLH Island Power Purchases include: CBPP Co-Gen, Nalcor Exploits, Rattle Brook, Star Lake, Wind Generation and capacity assistance (when applicable).
  - Adjusted for curtailable load, market activities and the impact of voltage reduction when applicable.
  - Due to limitations inherent in the design of combustion turbines, the output of combustion turbines may be reduced in the event that ambient temperatures exceed the threshold

**Section 3  
Island Peak Demand Information  
Previous Day Actual Peak and Current Day Forecast Peak**

Tue, Jul 25, 2023	Actual Island Peak Demand <sup>9</sup>	21:20	1,003 MW
Wed, Jul 26, 2023	Forecast Island Peak Demand		1,125 MW

Notes: 9. Island Demand / LIL / ML Exports (where applicable) is supplied by NLH generation and purchases, plus generation owned and operated by Newfoundland Power and Corner Brook Pulp & Paper (Deer Lake Power, DLP).